



## **ELECTRIC TOWEL RACK INSTALLATION INSTRUCTIONS**

Thank you for choosing to use “Neo” electric towel rack series products. Before using this product, please read installation instructions carefully. All the pictures and content here are for reference only. If you have any problems to install or use it, please contact our customer service.

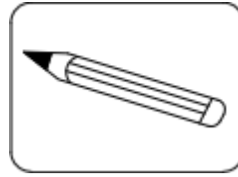
If there are any updates to the product, we will not notify you separately. May our “Neo” towel warmer provides you with convenience in your daily life!

### **Precautions for safe use:**

1. This product is only used for drying textiles such as towels / bath towels. Silk fabrics such as scarves are prohibited from drying on this product.
2. This product must be equipped with a fixed wiring and power cut-off device, and must be connected to the indoor overcurrent protection device;
3. The product operates at a voltage of 220V-240V,
4. Do not use this product when the heating elements or casing are damaged.
5. This product provides a 3-core power cord/cable, which must be grounded to avoid dangers.
6. During installation of the product, it is necessary to switch off the power to avoid dangers.
7. If the internal power cord of the product needs to be modified or the power cord needs to be repaired due to damage, it must be replaced by the manufacturer or by an authorized and recognized service agent to ensure safety and avoid injury; If external electrical wiring needs to be repaired, the power must be completely cut off.
8. This product is an electric heating product and cannot be used as a toy by children.

**Warning:** The installation or use location of this product should be as far away as possible from shower rooms, bathtubs, or places that are easily splashed with water

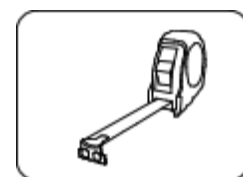
**Tools required:**



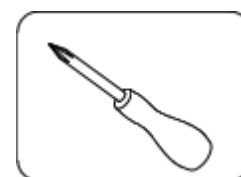
Pencil



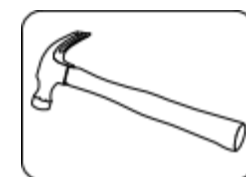
Electric drill



Tape measure



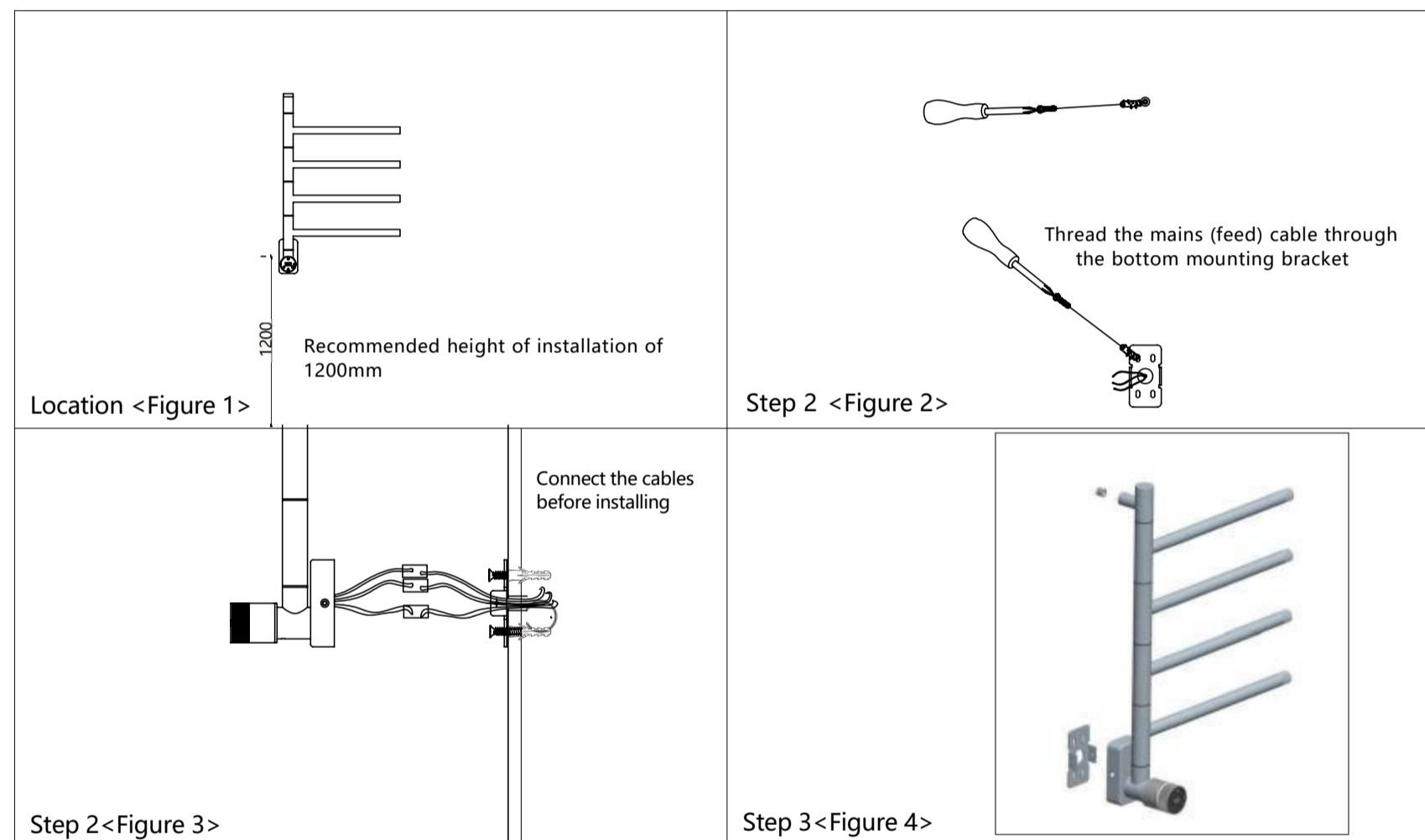
Cross head driver



Hammer

Model	Wall plugs ( $\varnothing$ 8*40)	Cross head, pan type self tapping screws (ST5*45)	Hex key (M2.5)	Hex key (M2)	Button hole plug
NEO	5 pcs	5 pcs	1 pc	1 pc	1 pc

**Schematic diagram of cable connections**

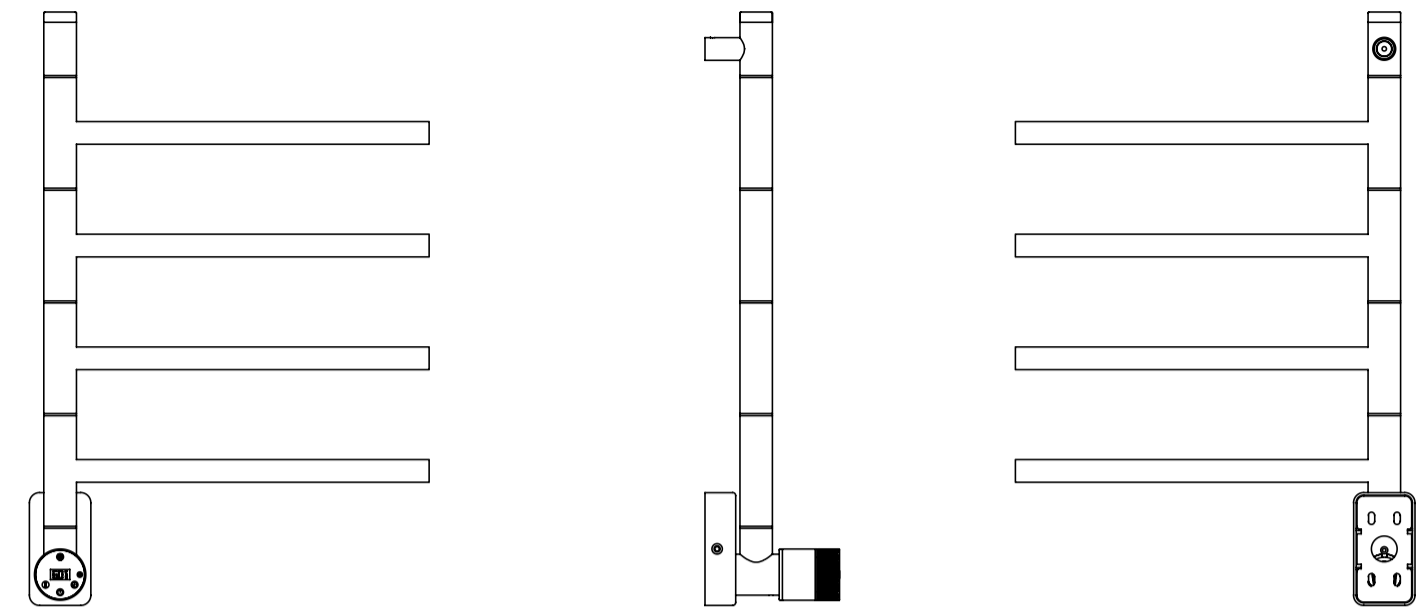


**Installation instructions assume fitting to a solid wall. Other fixings may be required for other wall types. It is recommended to install at a height of 1200mm above the ground.**

Step 1: Select the installation location and position the product template, mark the fixing positions and drill 6mm diameter holes at each point. (take care not to damage the supply cable)

Step 2 : Place the wall plugs in the holes, install the top and bottom brackets using self-tapping screws (ST5 \* 45). Pull the supply cable out through the bottom wall bracket before securing in place) as shown in Figure 2 above.

Step 3: Install the towel bar onto the wall plate, using the M5 \* 8 hexagonal countersunk screws. As shown in Figure 4



**Instructions for using rotary switch products:**

1. After Installation the product, switch on by pressing "Power on" function on rotating LCD touch control panel .
2. Press "Temperature" function to adjust the temperature control. Turn anti clockwise to lower the temperature, turn clockwise to increase the temperature.  
Press "Clock" function to switch to timer mode. Turn Anti clockwise to shorten the heating time, turn clockwise to increase the heating time in hourly increments.
3. Press "Auto mode" function to Activate automatic mode, the temperature will be c60 ° and will power off after 6 hours.

**WIFI connection instructions:**

1. Connect your phone to WiFi mode please Download the "Tuya" app.
2. Power on the electric towel rail and turn on Bluetooth mode on, on your phone , search for the "Smart towel rack" and connect . using the simple instructions.
3. Open the "Tuya" app to control the electric towel warmer over WiFi.